

## Appendix 1 - Insights on Transport Network Use

The content in this Appendix is extracted from the Economic-Transport Insights Report published produced by the Combined Authority Research and Intelligence team. The full report is available online together with a link to a regularly updated dashboard with the latest available data, available here:

### Full Report

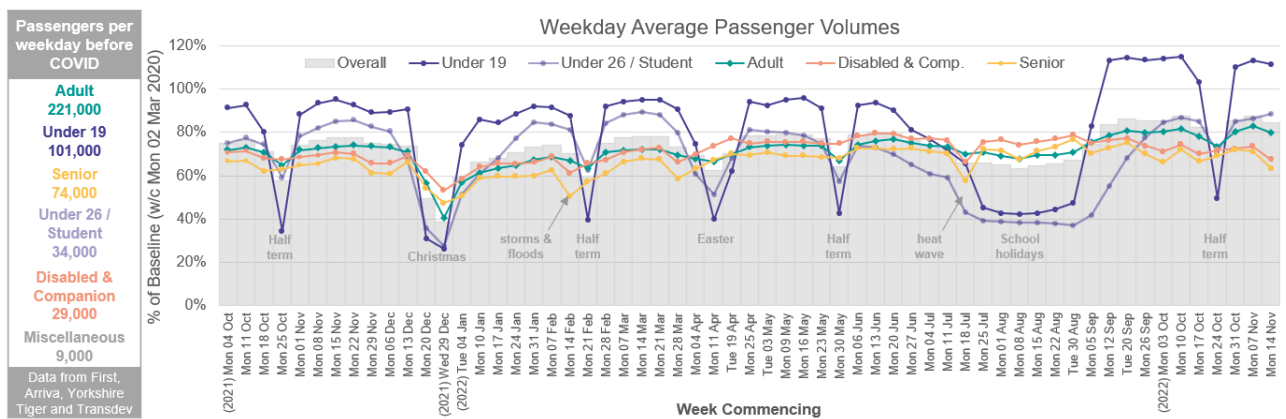
<https://www.westyorks-ca.gov.uk/media/9495/lcr-economic-and-transport-insights-november-external.pdf>

### Dashboard

<https://app.powerbi.com/view?r=eyJrIjoiNTA5ZjZlZWQtdm90ZGNiLTlINmQtNWZmZmQ0ZDBkMjRlIiwidCI6IjM0ZTtZkYmZjLWVlbnYtNDM0NS1hNGZILTgwNWl2N2U0ODBiMCIslmMiOj9>

### Overall weekday bus patronage 84% of baseline, but there is considerable variation by passenger cohort

The temporal trend in bus use (via ticket machines) relative to pre-pandemic is shown in the chart below. The latest data (week commencing 14<sup>th</sup> November) reveals overall weekday bus patronage is at 84% of pre-pandemic levels. Use by the senior and disabled cohorts was lower in the latest week than the equivalent week in 2021, this could be a seasonal change happening slightly earlier than last year. Other cohorts show higher patronage than similar weeks in 2021 though each cohort individually follows a similar pattern.



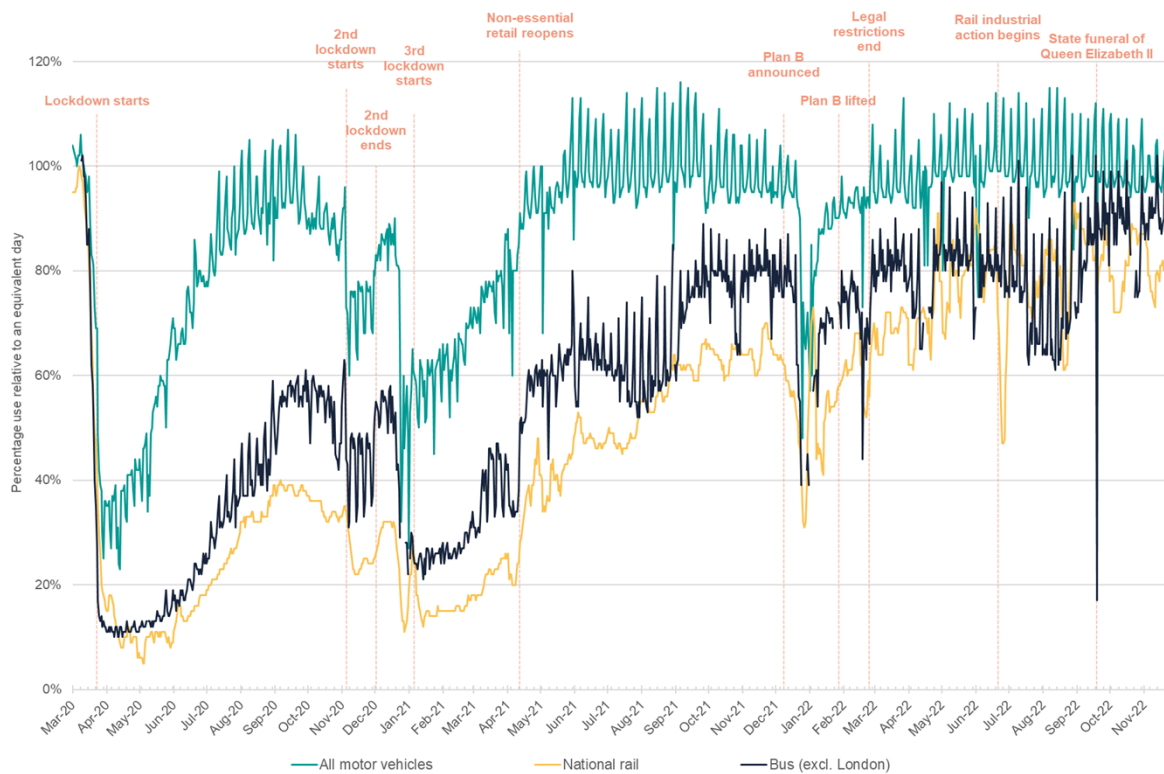
Note - Baseline period is week commencing Mon 02 Mar.

Source: Bus operators electronic ticket machine data, passenger boarding locations in West Yorkshire. First, Arriva, Yorkshire Tiger and Transdev account for over 90% of bus services in West Yorkshire. Graph shows First, Transdev and Yorkshire Tiger data. Data is for weekdays excluding bank holidays, with ticket types assigned to broad cohorts.

### National weekday bus use outside of London at 90% of pre-pandemic levels

Bus use outside London remains around 90% of baseline conditions over recent weekdays, with weekend usage spikes to around 100%, particularly on Sundays. Rail use fluctuates around industrial action. It was around 80% in the most recent weekdays with available data, although the most recent weeks are subject to revision as is normal for this source.

Nationally, motor vehicle use remains just below pre-pandemic levels with weekend usage above baseline.

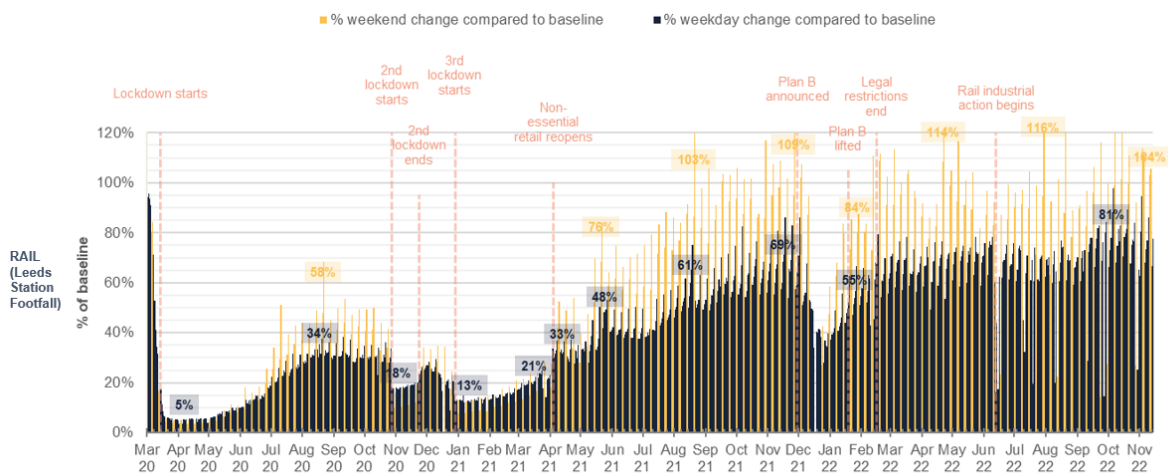


Note - Bus (excluding London) is expressed as the percentage of the equivalent day of the third week of January 2020. Motor vehicle use (cars, light and heavy vehicle goods) is expressed as the percentage of the equivalent day in the first week of February 2020.

Source: <https://www.gov.uk/government/statistics/transport-use-during-the-coronavirus-covid-19-pandemic>

### Rail footfall shows a gradual recovery

Average weekday footfall at Leeds rail station has fallen back from its October peak, reaching 76% of baseline in the most recent full week. Weekend average levels also dropped to 104%, by comparison to the March 2020 baseline. Industrial action continues to impact on rail demand.

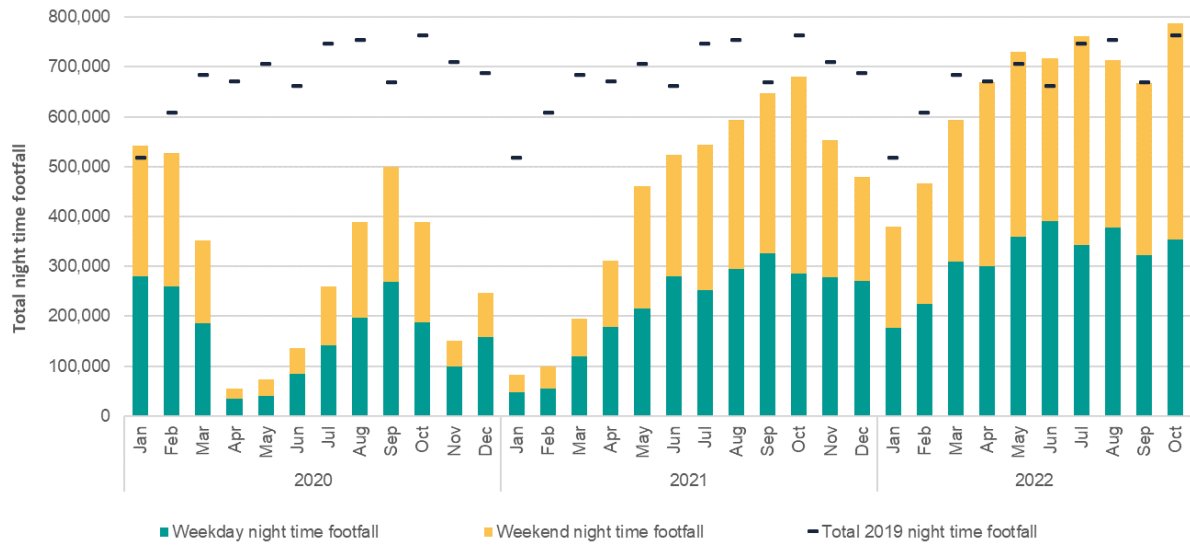


Baseline period is Monday 2nd - Friday 6th March 2020 (weekdays) and 29th Feb - 1st March and 6th-7th March (weekends)

Source: Leeds Rail Station Footfall - Network Rail

## Leeds centre night-time footfall recovers

Over recent months, with the exception of August, Leeds city centre night-time footfall continues to either match or exceed 2019 levels.



Source: Leeds City Council